



MACHINES FOR THE MANUFACTURING OF LAMINATE TUBES

AISA SAESA 80

Stock number:	LTL1 / 3200-LT1
Year:	1989
Condition:	Used
Item location:	Malsch
Delivery time:	on request/ t.b.a.

Technical specs

Description

AISA SAESA 80

Year of construction: 1989

Condition: very good, machine is operational

Tooling: for tube diameter 28 mm with two types of caps and tube diameter 25

mm with two types of caps

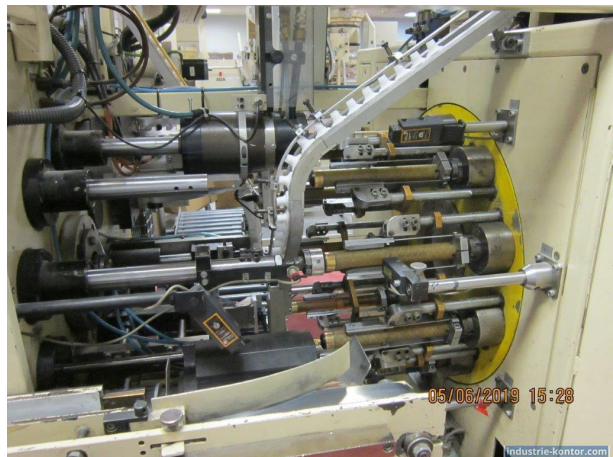
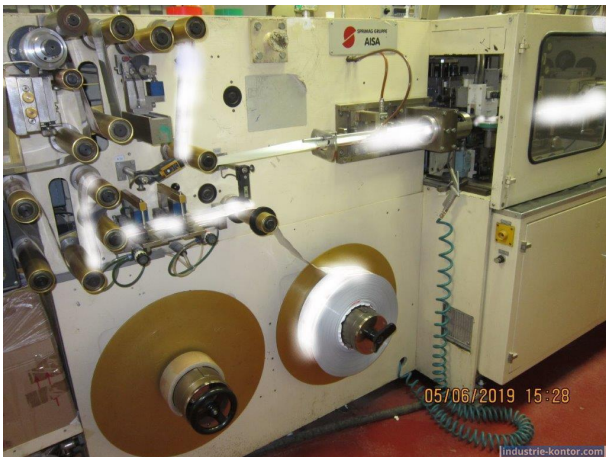
Options included: top seal unit

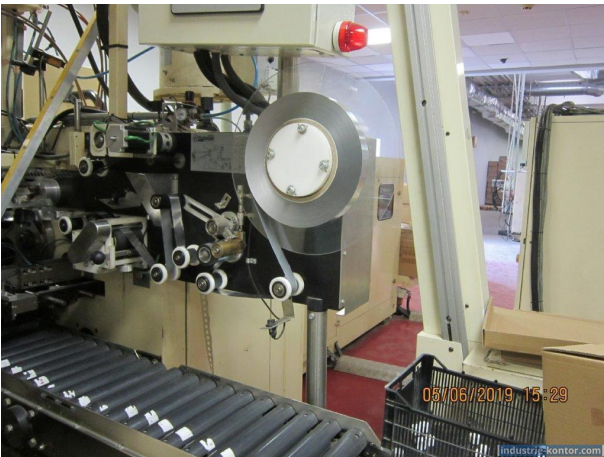
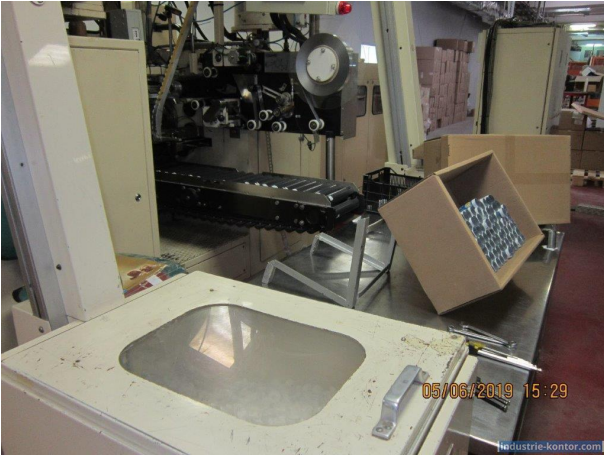
Auxiliary included: Complete production line with HF generators, chiller, automatic loading elevators for caps and shoulders

Available: to be agreed with the buyer

ALL PARAMETERS ARE WITHOUT ENGAGEMENT FROM OUR SIDE

Pictures







Contact information



Head Office:

Industrie-Kontor GmbH

Dieselstr. 37

6316 Malsch

Germany

Phone: [+49 \(0\)7246 7004 - 0](tel:+490724670040)

Fax: +49 (0)7246 7004 - 20

Email: info@industrie-kontor.com

Website: <https://industrie-kontor.com>